

SPIRAL FREEZER 2.000 kg/hr.

Capacity: 2.000 kg/hr.
Stages: 20
Belt width: 1000mm
Product clearance: 95mm
Infeed: South
Outfeed: East

Sizes:

Length machine chamber: 9,45 meters
Width machine chamber: 4,3 meters
Height machine chamber: 4,45 meters

Evaporator:

Brand: Goedhart
Evaporator Fans: 6x Woods Fan (4,2 kW / 1450 RPM / Ø 760 mm)

Compressor:

Brand: Sabroe
Type: 163 HF
Electromotor: 200 kW

Including:

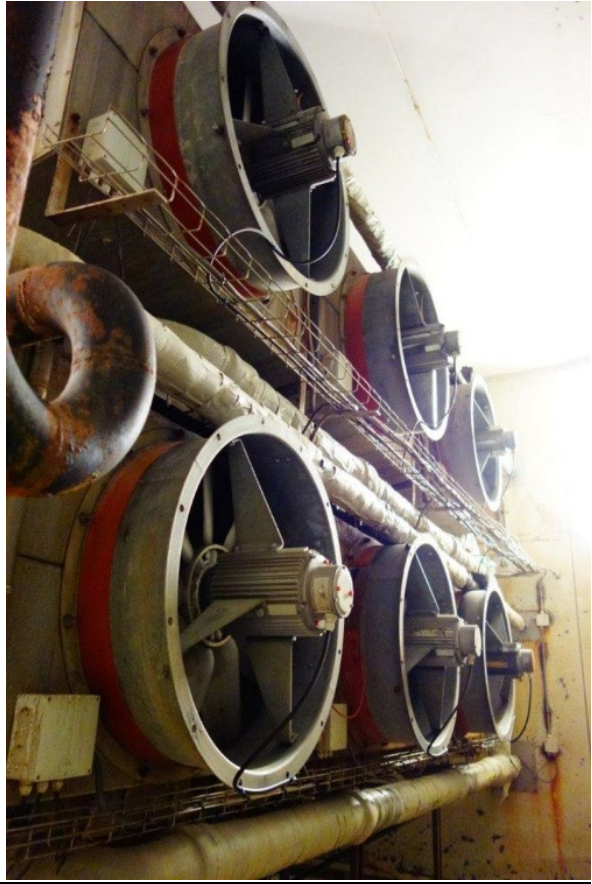
- Evapco Evaporating Condenser
- Receiver including 2x Hermetic pumps
- Original control panel with all regulations and relais

Excluding:

- Panels



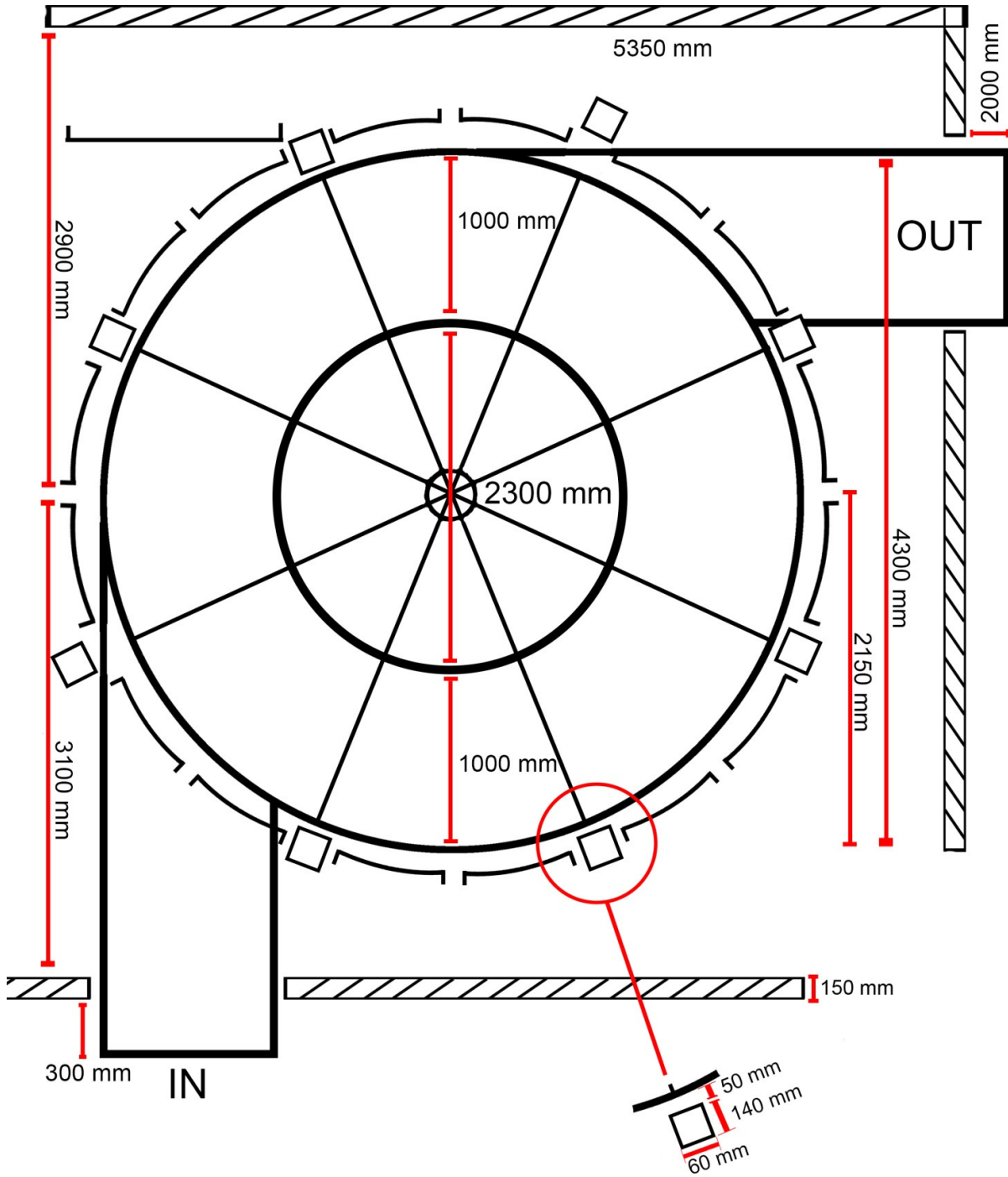




Drawings:

Top view

Band width: 1000 mm



Top view

